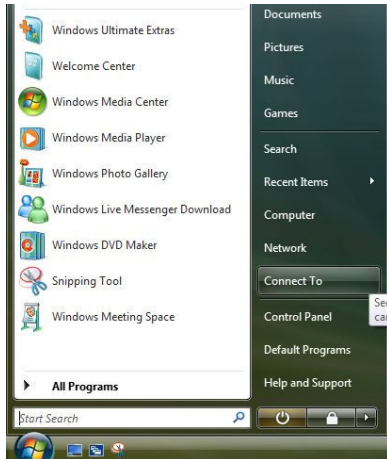
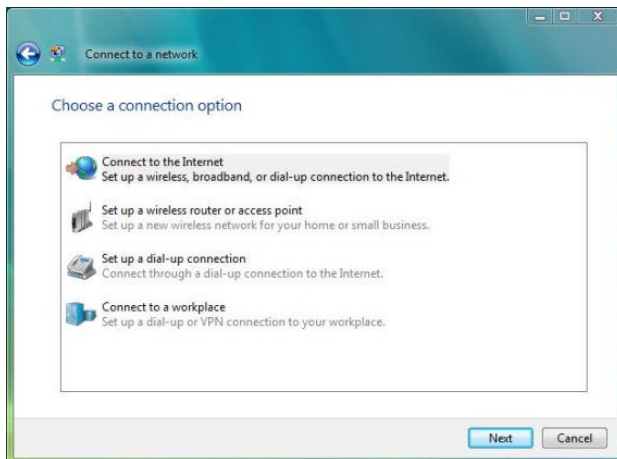


Start

1. Click pe butonul de **Start** si pe urma click **Connect To**.

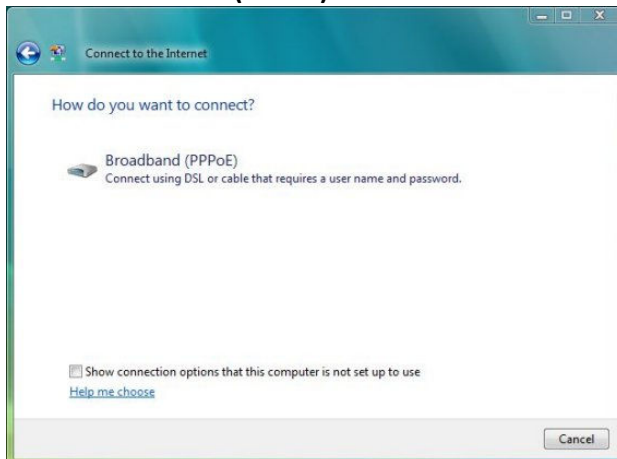


2. Click **Set up a connection or network link**.
Alege o conexiune
3. Click **Connect to the Internet option**. Click **Next**.



Cum vrei sa de conectezi?

4. Click **Broadband (PPPoE)**.



Scrie informatiile date de catre First Class Network (ISP)

5. Scrie userul si parola date de catre FCNet.
In casuta **Connection name** scrie FCNet.
Click **Connect**.



6. Computerul tau va incerca sa stabileasca o conexiune PPPoE catre internet.



7. Va apareea mesajul **You are connected to the Internet**. Din acest moment poti incepe sa navighezi pe internet.